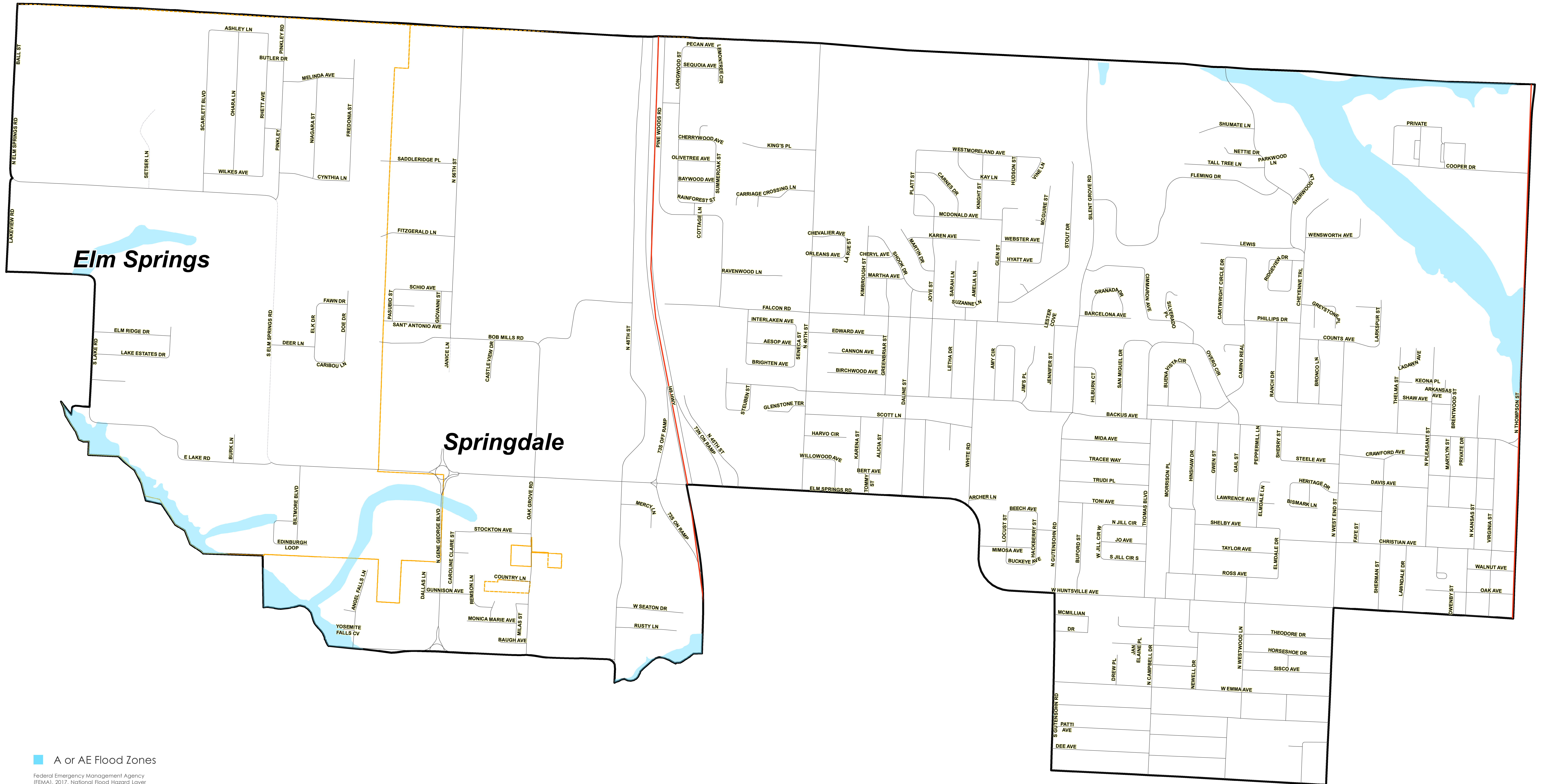


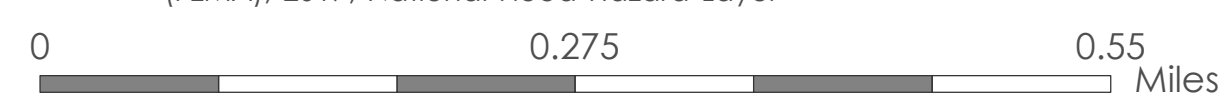


# DISTRICT #3 JP ROBERT MASSINGILL WASHINGTON COUNTY, AR



■ A or AE Flood Zones

Federal Emergency Management Agency (FEMA), 2017, National Flood Hazard Layer



1:6,250

1 in = 0 mile

Updated 12/13/2022, recent annexations and updates may not be included.  
Accuracy of maps is not guaranteed.  
Prepared by: Sam Ala

Sources:  
Arkansas Department of Environmental Quality, 2008, Stream Order Classification.  
Federal Emergency Management Agency, 2017, National Flood Hazard Layer.  
United States Geological Survey, 2017, National Hydrography Dataset.